



HJ 894-2017

$C_{10}-C_{40}$

Water quality—Determination of extractable petroleum hydrocarbons

($C_{10}-C_{40}$)—Gas chromatography

2017-12-21

2018-02-01

	ii
1	1
2	1
3	1
4	1
5	1
6	2
7	2
8	3
9	4
10	5
11	6
12	6
13	6
A	7

C₁₀-C₄₀

A

	2017	12	21
2018	2	1	

C₁₀-C₄₀

1

C₁₀-C₄₀

C₁₀-C₄₀

1000 ml

0.01 mg/L

0.04 mg/L

2

GB 17378.3

3

HJ/T 91

HJ/T 164

3

C₁₀-C₄₀

extractable petroleum hydrocarbons

n-C₁₀H₂₂

n-C₄₀H₈₂

C₁₀-C₄₀

4

FID

C₁₀-C₄₀

5

5.1

CH₂Cl₂

5.2

C₆H₁₄

5.3

Na₂SO₄

500

4h

5. 4	250µm-150µm	60	-100	500	4 h
5. 5	(HCl)=1.19 g/ml				
5. 6	1+1				
	50ml	5.5		50 ml	
5. 7	-		1+4		
5. 8	C ₁₀ -C ₄₀				=1000 mg/L
				/	
5. 9		99.999%			
5. 10		99.99%			
5. 11					
6					

			5 min		10 min	
	60 ml					
5.3			1000 ml			
7.2.2						
		6.4	1 ml			35
	750 hPa	10 ml	5.2	1 ml		
35		260 hpa	10 ml	5.2		1 ml
			1 ml			
7.2.3						
	10 ml	-	5.7	10 ml	5.2	6.5
					2 ml	5.2
	10 ml	-	5.7			

31.0 mg/L 155 mg/L 310 mg/L 1550 mg/L 3100 mg/L
mg/L

8.3

7.2

8.1

8.4

7.3

8.1

9

9.1

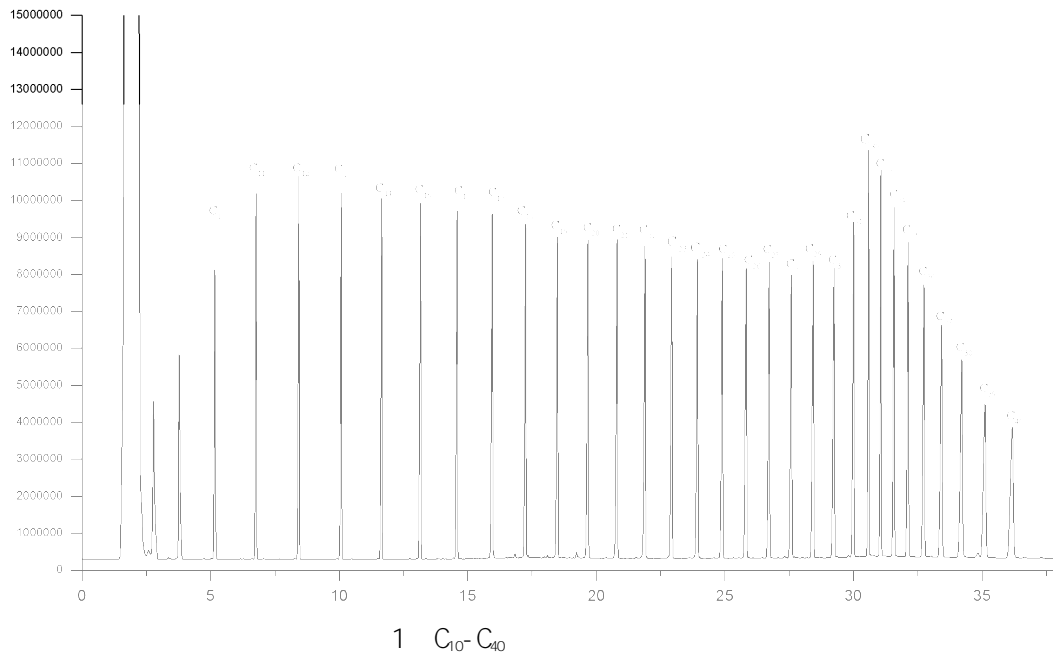
1 C₁₀-C₄₀

n-C₁₀H₂₂

n-C₄₀H₈₂

C₁₀-C₄₀

2



2 8.1

9.2

mg/L 1 C₁₀-C₄₀

— C₁₀-C₄₀ mg/L

Ax—

a—

b—

V— L

V₁— ml

f—

9.3

1.00 mg/L

1.00 mg/L

10

10.1

0.05 mg/L 0.10 mg/L 1.00 mg/L

6

6.1 %~6.8 % 7.0 %~9.6 %

9.0 %~/

0.01 mg/L 0.02 mg/L 0.30 mg/L 0.01 mg/L 0.03 mg/L 0.40 mg/L
6
6.6 %~24 % 6.7 %~31 % 6.2 %~29 %
29 % 18 % 17 %

10.2

0.05 mg/L 0.10 mg/L 0.10 mg/L 1.00 mg/L
84 %~96 % 78 %~101 % 74 %~93 % 83 %~108 % 91 %±11 %
85 %±17 % 86 %±15 % 90 %±19 %

11

11.1

20 20 / 1

11.2

0.995

11.3

20

± 20 %

11.4

20

1

70 %-120 %

12

13

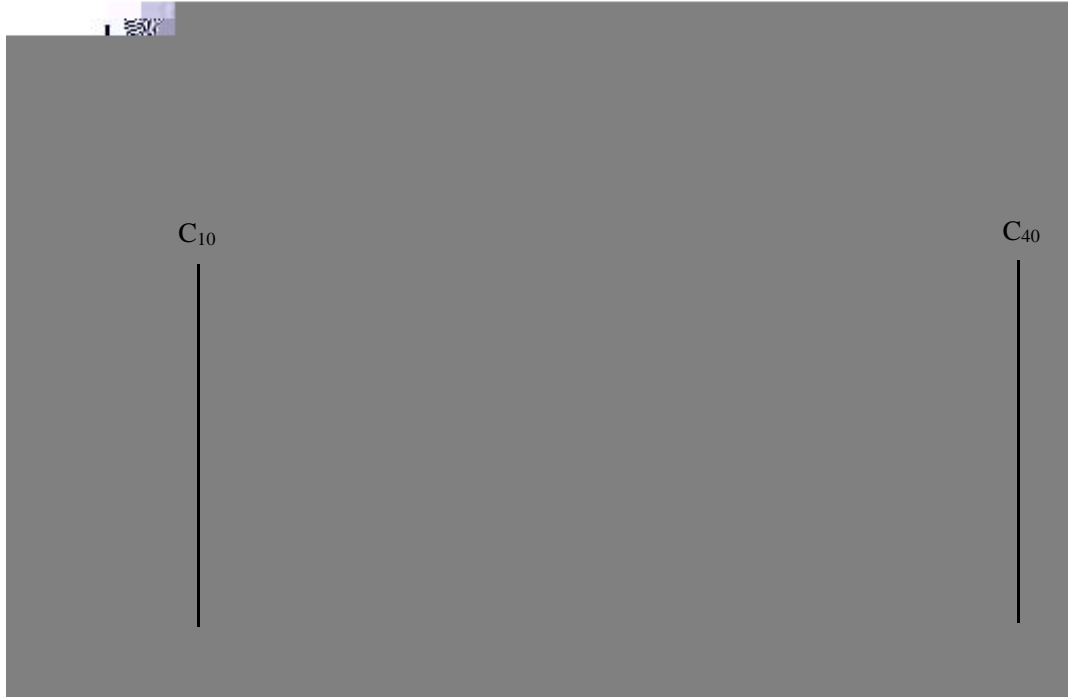
13.1

C₁₀H₂₂ C₄₀H₈₂

13.2

A

Response_



A. 1
